

Solo

Introducing the CommandFusion Solo All-In-One Networkable Controller.

- ✓ Ethernet / Wi-Fi
- ✓ Infrared
- ✓ RS232
- ✓ Dry contact inputs
- ✓ USB control & power
- ✓ Built in IR Blaster
- ✓ Built in IR Learner
- ✓ Scheduling and Rules Engine



Front



Back

*3D rendering. Final product may change slightly.

MAIN FEATURES

- Power 9-30VDC or USB powered (5VDC)
- 1 x RJ45 Ethernet port
- 1 x communication expansion slot (Wi-Fi and future expansion)
- 1 x port expansion slot (additional IR, Relays, IO, RS232)
- 2 x RS232 (1 Port if used with RTS/CTS)
- 1 x onboard IR Receiver/Learner with IR triggered rules
- 1 x onboard IR Blaster
- 6 x IR also 1-way RS232 and PWM control
- 4 x Dry contact inputs
- Onboard real time clock with battery backup
- 1 x USB Device for PC communication and control
- 1 x USB Host for future proofing

Due in the first half of 2014, the Solo is perfect for controlling a single room, or use to create a larger control system.

Built in Ethernet port for quick network connectivity.

Web administration page built in for simple configuration of:

- Schedules
- Rules (event triggered macros)
- Port testing and status

Includes two expansion slots to customise your controller to suit your requirements:

- Easily add Wi-Fi connectivity via the first communication expansion slot. Future proof for other communication standards.
- Easily add additional control ports via the second expansion slot using our plugin cards.

Quickly and easily create a custom interface to control your system from your mobile device via iViewer.

Utilises open protocols to easily integrate with other systems.

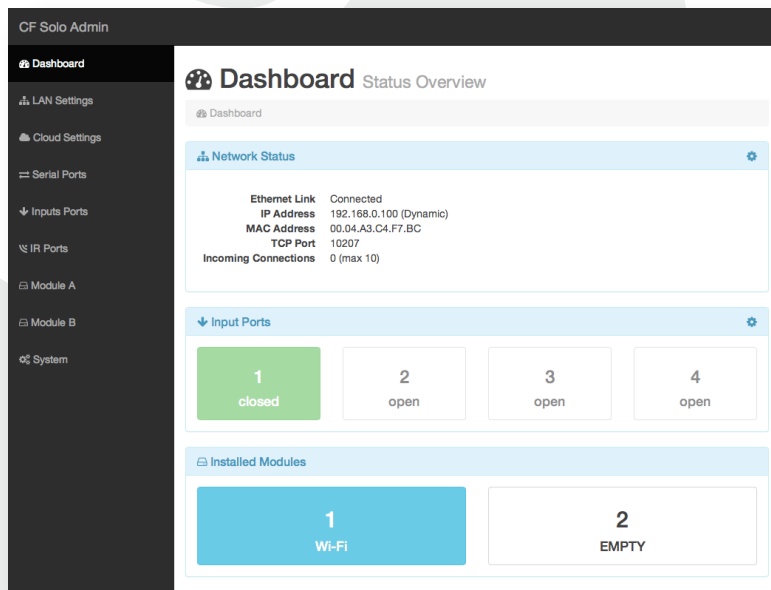
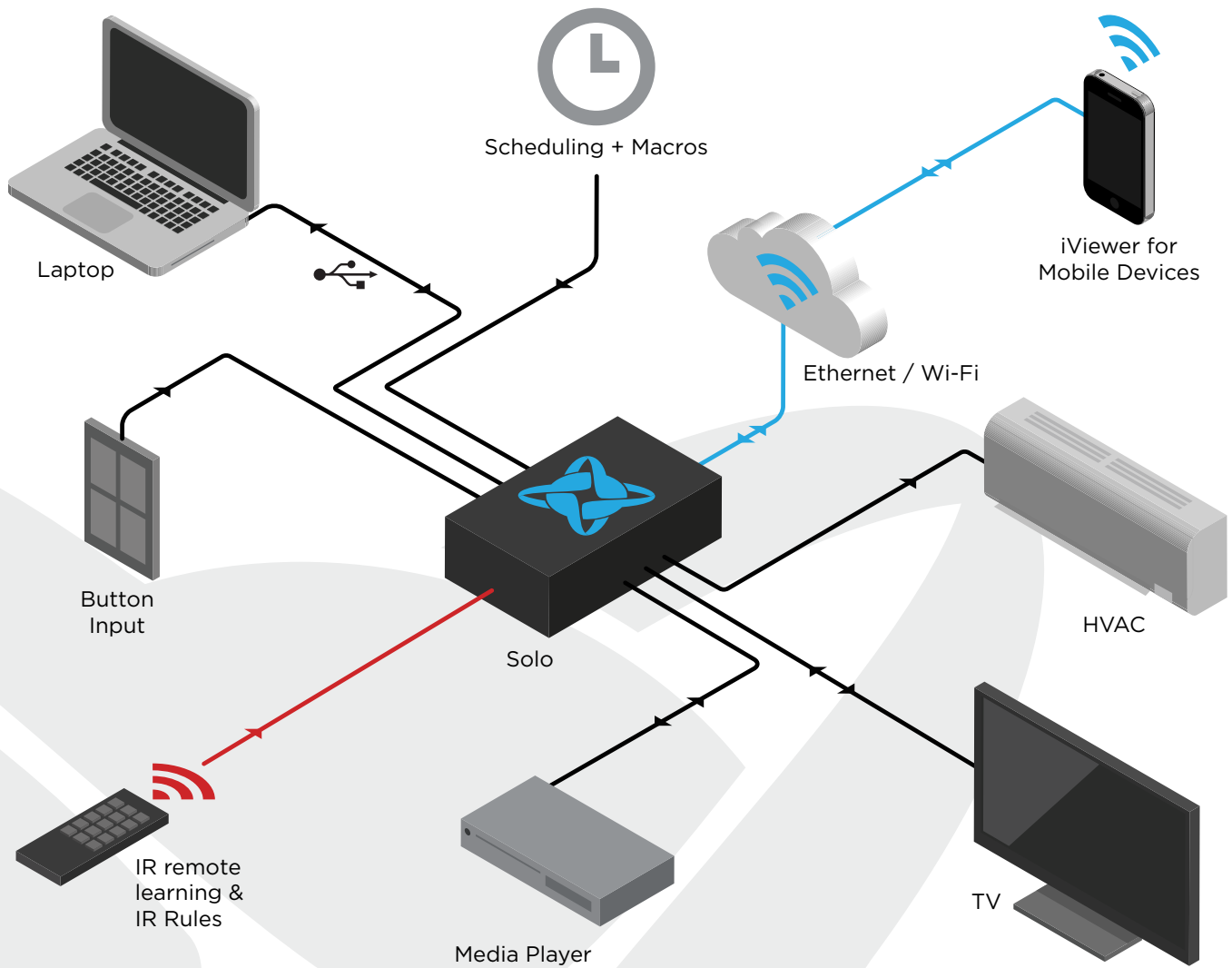
Built in IR Blasters on 3 sides to flood and control anything in the room.

USB device compatibility to allow for USB control and powering of the Solo.

USB Host capability for future expansion.

Solo

All-In-One Networkable Controller



Built in web browser configuration utility